

PASSWORD SAFE

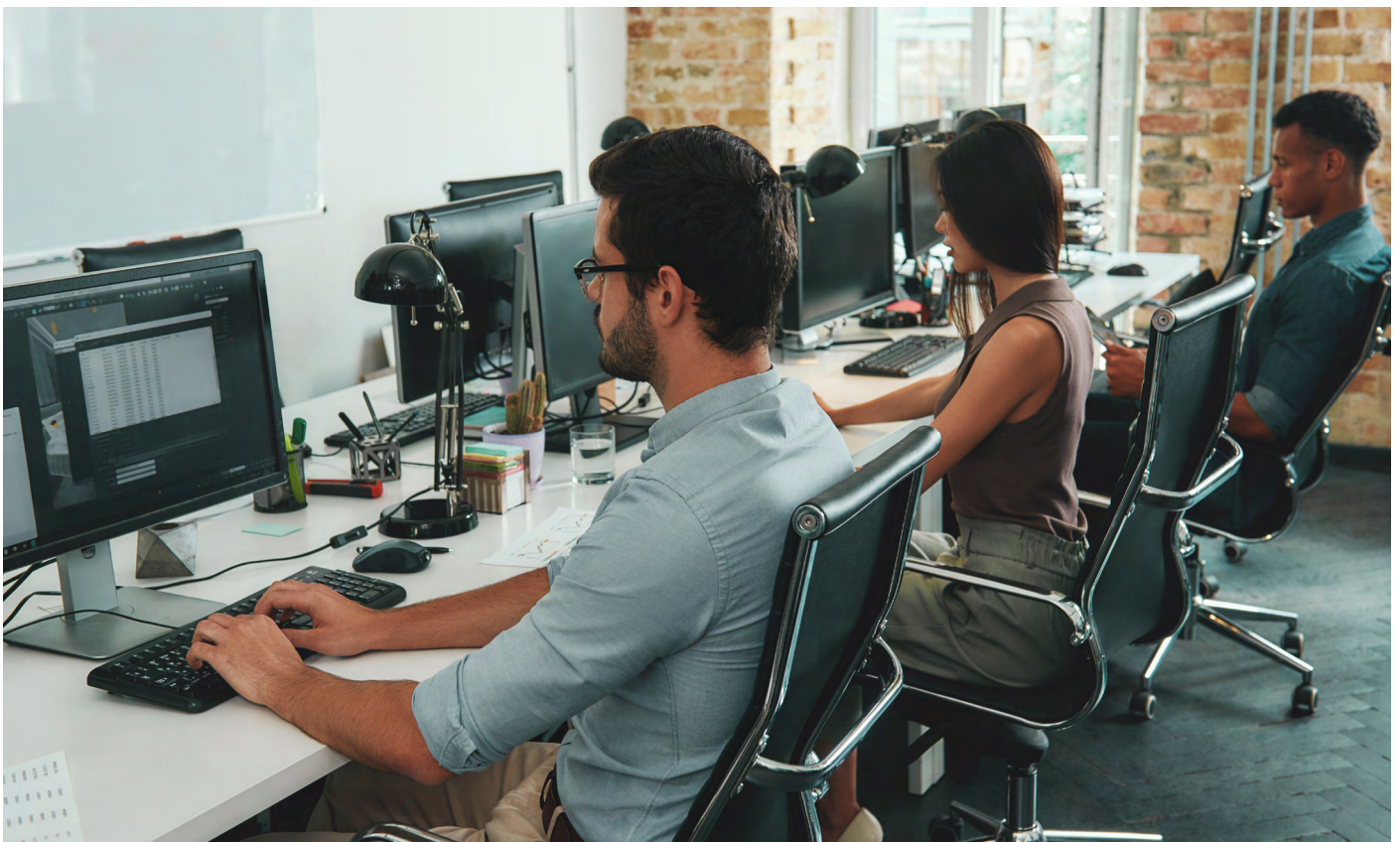
Scenario

PASSWORD SAFE IN PRACTICE THE SOLUTION FOR YOUR SYSTEM HOUSE

The competent administration of data in system houses is extremely complex. Not only the security of internal company information must be guaranteed, but also the protection of all customer data. Compliance with legal requirements is mandatory and a challenge for comprehensive password management - especially for very large system houses.



Data must be managed centrally and flexibly.



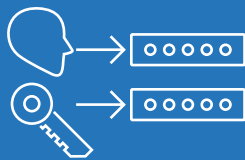


Adaptable Data Structure

Flexibly adaptable to any company structure: Free design of form fields and input masks

Document Management

Encrypted and versioned document storage within the database - with password linking possible



Password with Privacy Protection

Prevent passwords in plain text and optimise user behaviour through privacy notes

Offline Mode

Manage passwords even without connection to the server: The synchronisation of changes takes place in the background after re-integration into the network



Password Safe offers the flexible and secure solution for highly encrypted databases thanks to its central administration. The adaptable data structure enables the entry of complex contact information and passwords up to simple licence files and documentation which can be loaded into the database. In addition, the system house can also

make the Password Safe solution available to its customers and provide them with secure support. Access is always logged and documented. The employee can access passwords which are required at the customer's premises via offline mode or alternatively work with the WebViewer.

MATESO GmbH

Daimlerstraße 15, D-86356 Neusäß

Web: www.passwordsafe.com

Email: sales@passwordsafe.de

Tel: +49 821 74 77 87-0



MATESO
PASSWORD SAFE